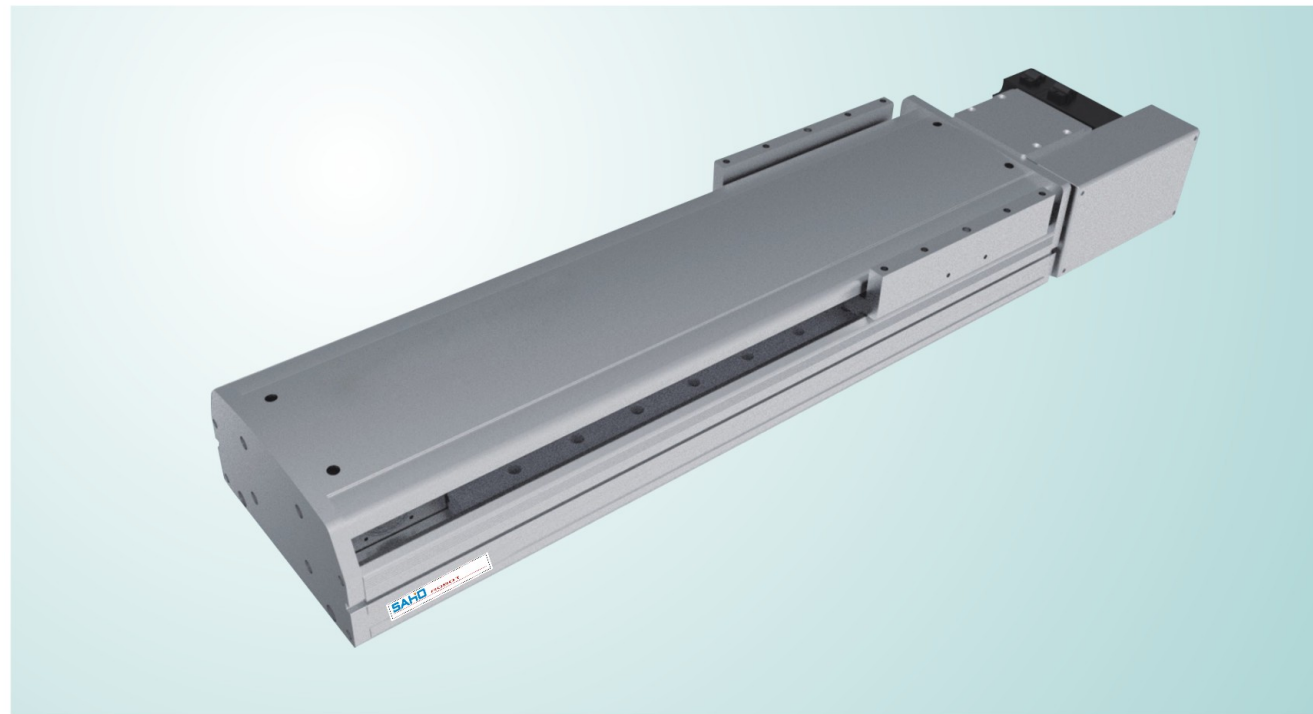


STB220A Series

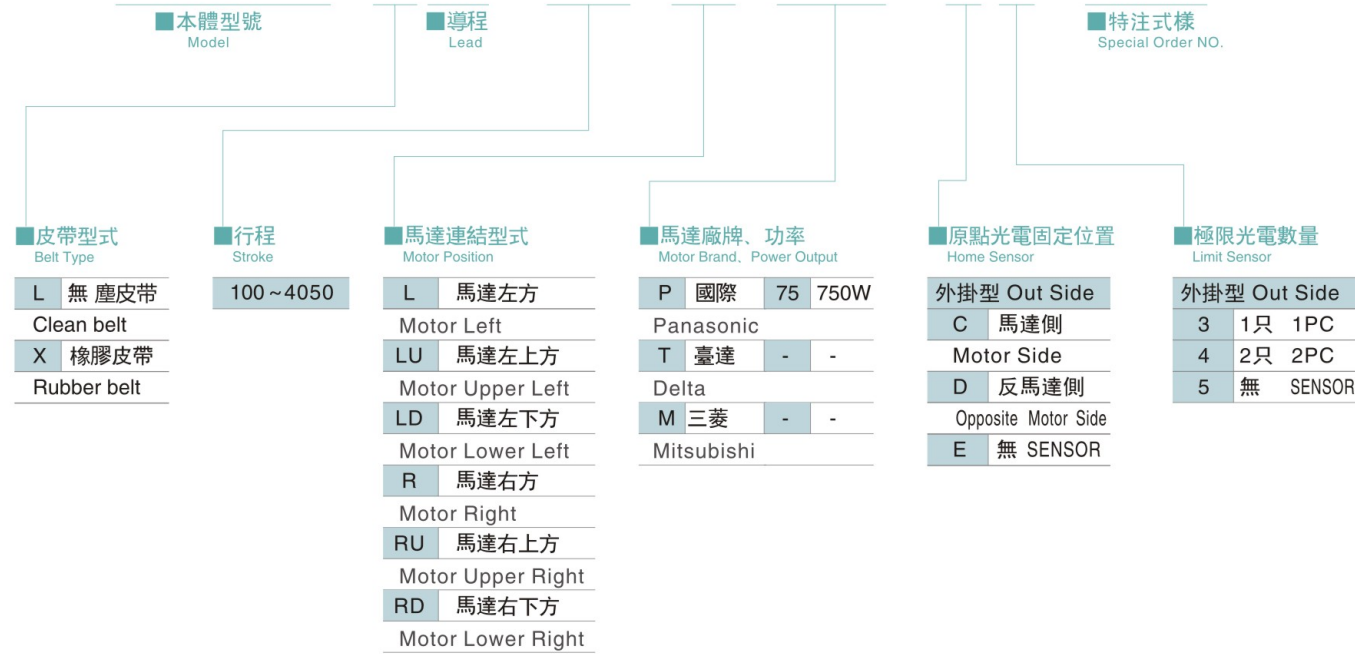
▶ 皮带滑台/一般环境
Belt Sliders/General Environment



最大行程 4050 mm (Maximum stroke) | 最高速度 2000 mm/s (top speed) | 马达容量 750 W (Motor capacity) | 皮带宽度 50MM (Belt Width) | 直线滑轨 23X18-2支 (Straight track)

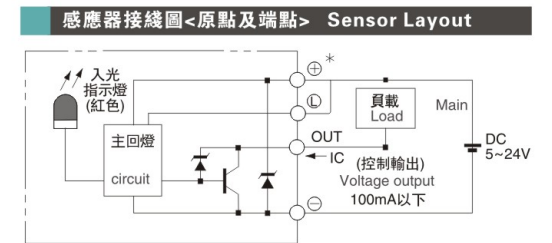
型號表示方式 Ordering Method

STB220A - L 40 - 100 - L - M75 - C 4 - 0001



2022产品综合型录

基本仕様 Specification			
性能 Capability	位置重複精度 Repeatability (mm)	±0.04	
	導程 Lead (mm)	40	
	最高速度 Maximum Speed (mm/s)	2000	
	最大可搬重量 Maximum Payload	水平使用 Horizontal (kg)	85
		垂直使用 Vertical (kg)	
	定格推力 Rated Thrust (N)	367	
標準行程 Stroke Pitch (mm)	100-4050mm/50間隔 50mm pitch		
部品 Parts	AC伺服馬達容量 AC Servo Motor Output (W)	750W	
	皮帶寬度 Belt Width (mm)	50	
	高剛性直線滑軌 High Rigidity Linear Guide (mm)	23X18	
	原點感應器 Home Sensor	外掛 Outside	EE-SX672 (NPN)



容許負載力距表N.m Allowable Overhang																	
	<p>(單位:mm)</p>																
	<p>(單位:mm)</p>																
水平安裝 Horizontal installation	<table border="1"> <thead> <tr> <th></th> <th>A</th> <th>B</th> <th>C</th> </tr> </thead> <tbody> <tr> <td>45kg</td> <td>1588</td> <td>600</td> <td>349</td> </tr> <tr> <td>65kg</td> <td>1052</td> <td>328</td> <td>285</td> </tr> <tr> <td>85kg</td> <td>768</td> <td>281</td> <td>206</td> </tr> </tbody> </table>		A	B	C	45kg	1588	600	349	65kg	1052	328	285	85kg	768	281	206
	A	B	C														
45kg	1588	600	349														
65kg	1052	328	285														
85kg	768	281	206														
牆面安裝 Wall installation	<table border="1"> <thead> <tr> <th></th> <th>A</th> <th>B</th> <th>C</th> </tr> </thead> <tbody> <tr> <td>40kg</td> <td>500</td> <td>685</td> <td>1805</td> </tr> <tr> <td>60kg</td> <td>315</td> <td>430</td> <td>1152</td> </tr> <tr> <td>85kg</td> <td>206</td> <td>281</td> <td>768</td> </tr> </tbody> </table>		A	B	C	40kg	500	685	1805	60kg	315	430	1152	85kg	206	281	768
	A	B	C														
40kg	500	685	1805														
60kg	315	430	1152														
85kg	206	281	768														

水平使用時 Static Loading Moment	
	<p>(單位 Unit : N.m)</p>
MY	2052
MP	2052
MR	1810

*力距表所表示的數據，代表重心。
The torque value in the chart indicate the center of gravity. s

*符合型錄規範的正常使用下，保證壽命為5000公里。
Operation life is 5,000km when the product is using under the specified condition

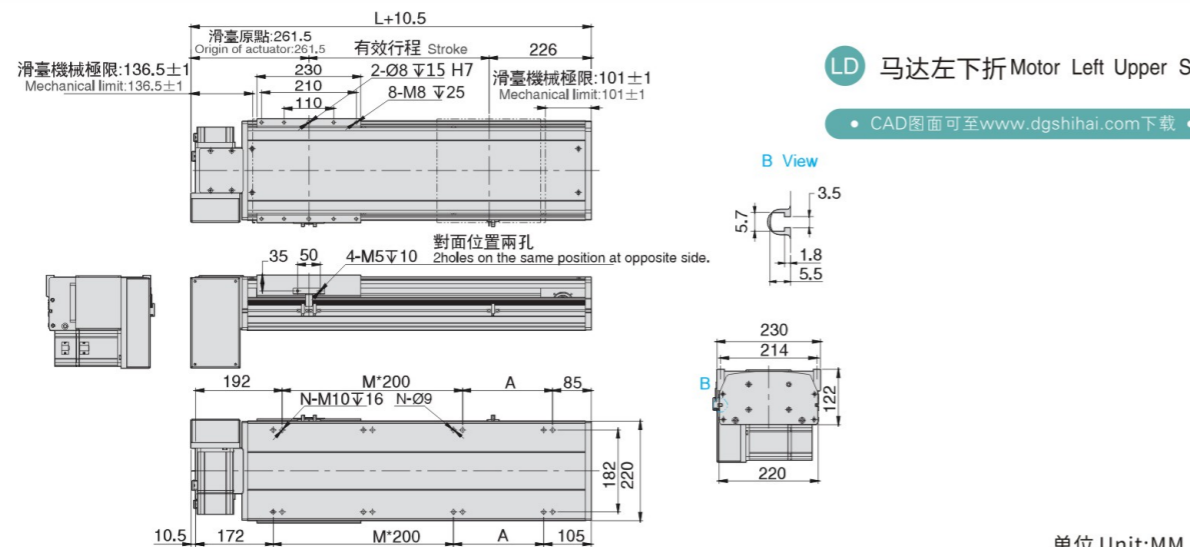
*倒吊使用無法套用標準規範，如有需求請洽詢我業務。
Data information is not for ceiling-mount inverse use. Contact us for the details if you want to apply ceiling-mount inverse usage.

搭配伺服馬達一覽表 Suitable Motor Brand						
廠牌 Brand	馬達記號 Mark	煞車有無 Brake	馬達容量 Watt	電源電壓 AC-Voltage	伺服馬達型號 Motor Model	驅動器型號 Driver Model
三菱 Mitsubishi	M	無煞車(水平仕様) No Brake (Horizontal Type)	750	220	HF-KP73	MR-J3-70A
國際 Panasonic	P	無煞車(水平仕様) No Brake (Horizontal Type)	750	220	MHMD082P1S	MCDT3520
臺達 Delta	T	無煞車(水平仕様) No Brake (Horizontal Type)	750	220	ECMA-C20807RS	ASD-B20721-B

European standard belt
Screw ball slide / general environment
KTR series
Built-in slide
European screw
Rack series
EC Series

LD 马达左下折 Motor Left Upper Side

• CAD图面可至www.dgshihai.com下载 •

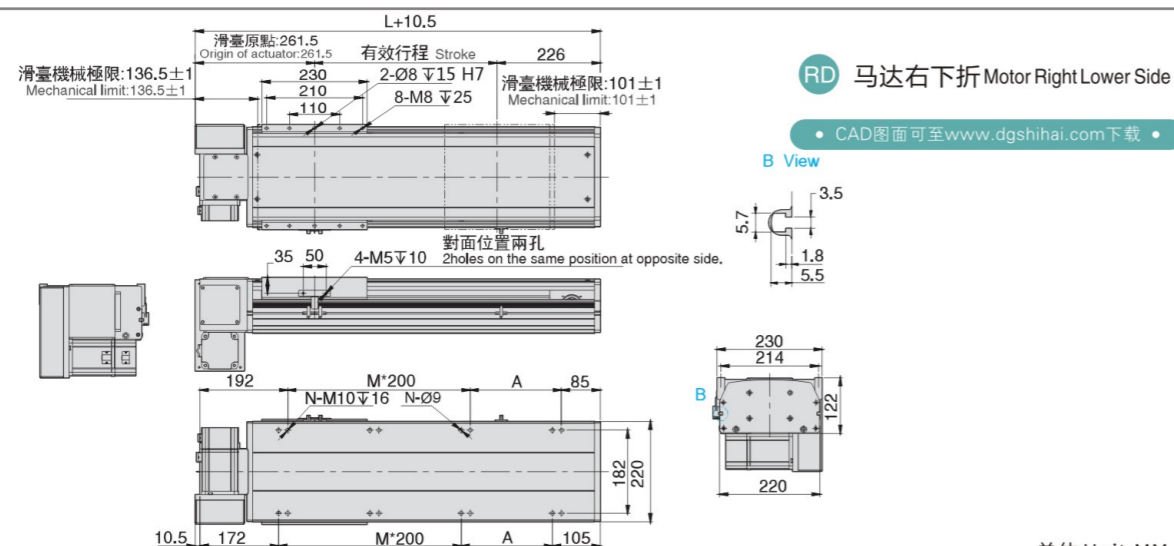


单位 Unit:MM

有效行程 stroke	100	150	200	250	300	350	400	450	500	550	600	650	700	750	800	850	900	950	1000	1050	1100	1150	1200	1250	1300	1350	1400	1450	1500	1550
L	577	627	677	727	777	827	877	927	977	1027	1077	1127	1177	1227	1277	1327	1377	1427	1477	1527	1577	1627	1677	1727	1777	1827	1877	1927	1977	2027
A	100	150	200	50	100	150	200	50	100	150	200	50	100	150	200	50	100	150	200	50	100	150	200	50	100	150	200	50	100	150
M	1	1	1	2	2	2	2	3	3	3	3	4	4	4	4	5	5	5	5	6	6	6	6	7	7	7	7	8	8	8
N	6	6	6	8	8	8	8	10	10	10	10	12	12	12	12	14	14	14	14	16	16	16	16	18	18	18	20	20	20	
KG	30	31.2	32.4	33.6	34.8	36	37.2	38.4	39.6	40.8	42	43.2	44.4	45.6	46.8	48	49.2	50.4	51.6	52.8	54	55.2	56.4	57.6	58.8	60	61.2	62.4	63.6	64.8
有效行程 stroke	1600	1650	1700	1750	1800	1850	1900	1950	2000	2050	2100	2150	2200	2250	2300	2350	2400	2450	2500	2550	2600	2650	2700	2750	2800	2850	2900	2950	3000	3050
L	2077	2127	2177	2227	2277	2327	2377	2427	2477	2527	2577	2627	2677	2727	2777	2827	2877	2927	2977	3027	3077	3127	3177	3227	3277	3327	3377	3427	3477	3527
A	200	50	100	150	200	50	100	150	200	50	100	150	200	50	100	150	200	50	100	150	200	50	100	150	200	50	100	150	200	50
M	8	9	9	9	9	10	10	10	10	11	11	11	12	12	12	12	13	13	13	13	14	14	14	14	15	15	15	15	16	
N	20	22	22	22	22	24	24	24	24	26	26	26	26	28	28	28	28	30	30	30	30	32	32	32	32	34	34	34	34	36
KG	66	67.2	68.4	69.6	70.8	72	73.2	74.4	75.6	76.8	78	79.2	80.4	81.6	82.8	84	85.2	86.4	87.6	88.8	90	91.2	92.4	93.6	94.8	96	97.2	98.4	99.6	100.8

RD 马达右下折 Motor Right Lower Side

• CAD图面可至www.dgshihai.com下载 •



单位 Unit:MM

有效行程 stroke	100	150	200	250	300	350	400	450	500	550	600	650	700	750	800	850	900	950	1000	1050	1100	1150	1200	1250	1300	1350	1400	1450	1500	1550
L	577	627	677	727	777	827	877	927	977	1027	1077	1127	1177	1227	1277	1327	1377	1427	1477	1527	1577	1627	1677	1727	1777	1827	1877	1927	1977	2027
A	100	150	200	50	100	150	200	50	100	150	200	50	100	150	200	50	100	150	200	50	100	150	200	50	100	150	200	50	100	150
M	1	1	1	2	2	2	2	3	3	3	3	4	4	4	4	5	5	5	5	6	6	6	6	7	7	7	7	8	8	8
N	6	6	6	8	8	8	8	10	10	10	10	12	12	12	12	14	14	14	14	16	16	16	16	18	18	18	20	20	20	
KG	30	31.2	32.4	33.6	34.8	36	37.2	38.4	39.6	40.8	42	43.2	44.4	45.6	46.8	48	49.2	50.4	51.6	52.8	54	55.2	56.4	57.6	58.8	60	61.2	62.4	63.6	64.8
有效行程 stroke	1600	1650	1700	1750	1800	1850	1900	1950	2000	2050	2100	2150	2200	2250	2300	2350	2400	2450	2500	2550	2600	2650	2700	2750	2800	2850	2900	2950	3000	3050
L	2077	2127	2177	2227	2277	2327	2377	2427	2477	2527	2577	2627	2677	2727	2777	2827	2877	2927	2977	3027	3077	3127	3177	3227	3277	3327	3377	3427	3477	3527
A	200	50	100	150	200	50	100	150	200	50	100	150	200	50	100	150	200	50	100	150	200	50	100	150	200	50	100	150	200	50
M	8	9	9	9	9	10	10	10	10	11	11	11	12	12	12	12	13	13	13	13	14	14	14	14	15	15	15	15	16	
N	20	22	22	22	22	24	24	24	24	26	26	26	26	28	28	28	28	30	30	30	30	32	32	32	32	34	34	34	34	36
KG	66	67.2	68.4	69.6	70.8	72	73.2	74.4	75.6	76.8	78	79.2	80.4	81.6	82.8	84	85.2	86.4	87.6	88.8	90	91.2	92.4	93.6	94.8	96	97.2	98.4	99.6	100.8

European standard belt
Screw shaft / general environment
Belt Sliders/General Environment
Screw shaft / general environment
Screw shaft / dust-free environment
Belt Sliders/General Environment
Screw shaft / dust-free environment
Belt Sliders/General Environment
KRR series
Built-in slide
European screw
Pack series
EC Series